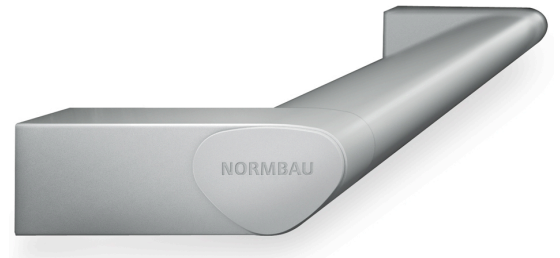


Press Release

Contact:

*NORMBAU Beschläge und Ausstattungs GmbH
77871 Renchen/ Germany >www.normbau.de<
Ellen Löffler, Tel.: 00 49 78 43704-24*

cavere



The C.F. Møller designers have developed an innovative range of fittings for NORMBAU for the Disability Access bathroom. These high quality functional products are designed for use in environments both in and out of the home.

Research findings indicate that a triangular gripping profile is the best combination in terms of strength, comfort and ergonomics. The semi-circular edges to the side panels are pleasing to the touch and provide a very secure grip and a high level of safety. The design is implemented consistently throughout the range, so the shapes of the individual elements are in harmony and reinforce the unique qualities of the design.

The safety and comfort qualities of »cavere« can be felt in the fine balance between the contour and grip cross section.

The whole »cavere« range is manufactured from aluminium. It is both light and strong, and being recyclable it is environmentally sustainable.